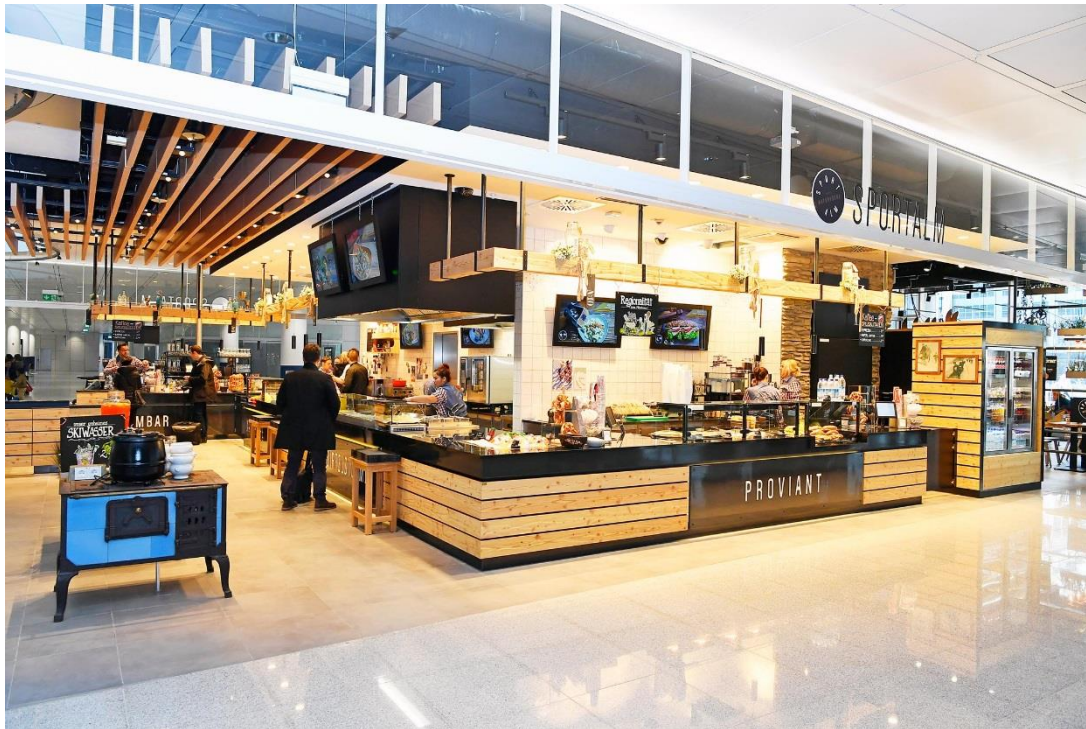


Lunch in the cable car: new Alpine-themed restaurant opens in Munich Airport's Terminal 2



Date of photo:
15.02.2017

Archive number:
_ATF2162

Photo:
Alex Tino Friedel

Copyright:
Munich Airport, Corporate
Communications

The Alps just got a little closer: "Sportalm", the latest addition to the wealth of food choices in Terminal 2, will appeal to outdoor types with its mountain-themed decor and Alpine specialties. The lower level of the new restaurant – which will soon add a top story – is now open to sports lovers and those who appreciate good food. The upper floor, with a sun terrace, love seats and lounge chairs, is due to open in April 2017.

The spacious [800 square meter] restaurant features Alpine charm down to the last detail. Tree trunks, traditional knick-knacks, an old barn door and a stone trough are reminiscent of a traditional Upper Bavarian farmhouse. Along with authentic, old-style coziness, sports play a leading role in Sportalm. While enjoying delicious meals, guests can follow live events on big screens.

Adding to the Alpine atmosphere is some unique seating: a gondola from a real ski lift. With a view of snowy peaks and rocky slopes, visitors will feel like they're on a ski trip. The natural, home-style menu has something for everyone: from the ever-popular kaiserschmarrn to many new favorites, from pasta dishes to salads.